

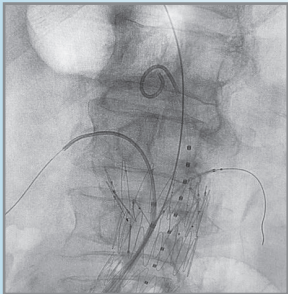
**TourGuide™**

Steerable Sheath

# CUSTOMIZED VESSEL ACCESS **15 CATHETERS IN 1 SHEATH**

**Common Carotid Access**

Stable Bi-lateral  
Renal Cannulation



**Renal Access**

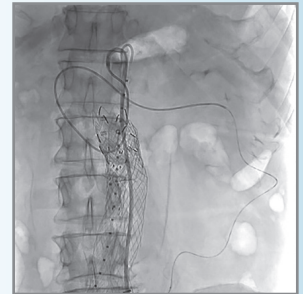
Embolization  
Coil Delivery



**TAA and AAA Repair**

**Transseptal Access**

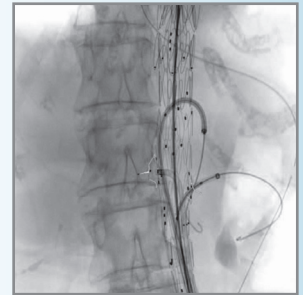
SMA Cannulation

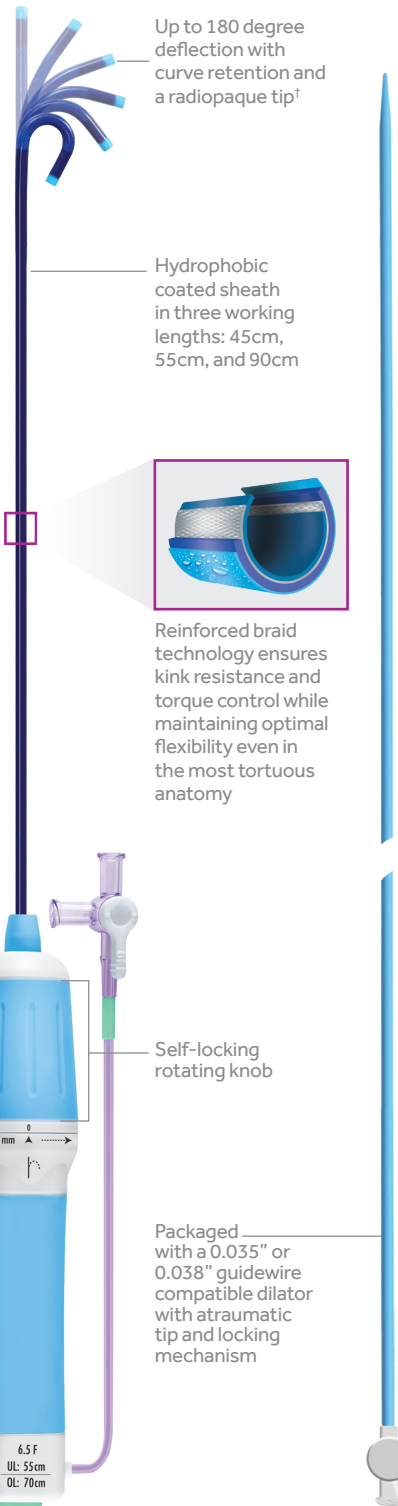
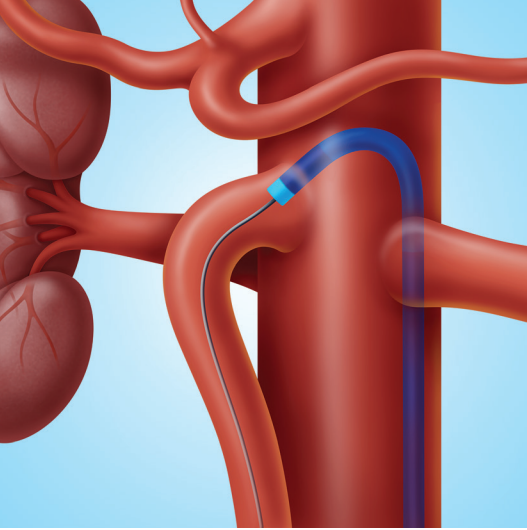


**Celiac / SMA Access**

**Iliac Access**

Multi-Vessel Access





Up to 180 degree deflection with curve retention and a radiopaque tip†

Hydrophobic coated sheath in three working lengths: 45cm, 55cm, and 90cm

Reinforced braid technology ensures kink resistance and torque control while maintaining optimal flexibility even in the most tortuous anatomy

Self-locking rotating knob

Packaged with a 0.035" or 0.038" guidewire compatible dilator with atraumatic tip and locking mechanism

See the device manual for detailed information regarding the instructions for use, the implant procedure, indications, contraindications, warnings, precautions, and potential adverse events. For further information, contact your local Medtronic representative and/or consult the Medtronic website at [medtronic.eu](http://medtronic.eu).

#### ORDERING INFORMATION

Catalog Number	Inner Dia. Size (Fr)	Usable Length (cm)	Deflection Length @ 180° (mm)	Deflection Length @ 90° (mm)
TG0654509	6.5	45	9	25
TG0654517	6.5	45	17	33
TG0655509	6.5	55	9	25
TG0655517	6.5	55	17	33
TG0659009	6.5	90	9	25
TG0704509	7.0	45	9	25
TG0704517	7.0	45	17	33
TG0705509	7.0	55	9	25
TG0705517	7.0	55	17	33
TG0709009	7.0	90	9	25
TG0854517	8.5	45	17	33
TG0855517	8.5	55	17	33
TG0855522	8.5	55	22	40
TG0859017	8.5	90	17	33

#### Conformability

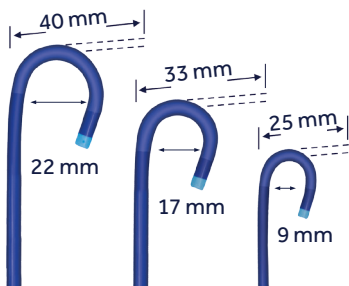
Steerable hydrophobic coated sheath improves access to hard-to-reach sites and eliminates need to change sheaths to reach desired position.

#### Versatility

The TourGuide™ sheath has a wide variety of applications within the human vasculature, from the periphery to the intracardiac.

#### Control

Precise deflection using the self-locking rotating knob allows you to maintain control of the full procedure.



†Bench Test Data on file at Medtronic with reference Fustar Comparison Test. Test data not indicative of clinical performance

**Medtronic**

[medtronic.eu/aortic](http://medtronic.eu/aortic)

UC201811834aEE © 2021 Medtronic. All rights reserved. Medtronic,